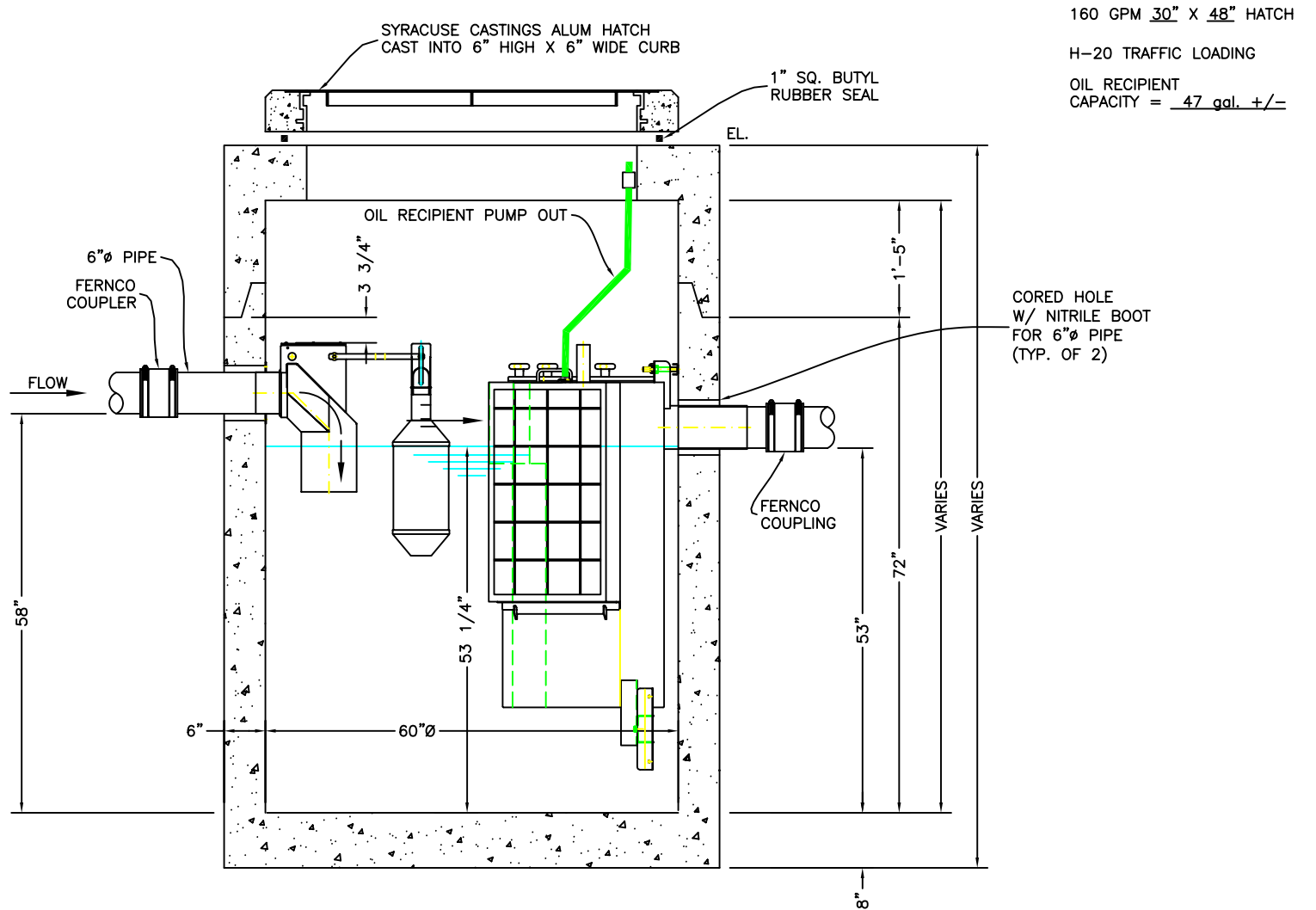


NOTE: INTERIOR OF GRIT CHAMBER BASE TO BE LINED w/ GSE H.D.P.E. "STUDLINER".

ecoSep - 160 GPM - STANDARD - GRIT CHAMBER

REVISIONS	PROJECT:
	LOCATION:
	OWNER:
	ENGINEER:
	CONTRACTOR:
	MANUFACTURER: ROYAL CONCRETE PIPE
	PRODUCT DESIGNATION: ECOSEPP - 160 GPM - STANDARD - GRIT CHAMBER
	SCALE: 1/2"=1' DRAWN BY: JGS DATE: 01-09-07 DWG. NO: esep_res_160-gc
	DESIGNED BY: JGS CHECK 1: CHECK 2:





160 GPM 30" X 48" HATCH
 H-20 TRAFFIC LOADING
 OIL RECIPIENT
 CAPACITY = 47 gal. +/-

NOTE:
 INTERIOR OF BASE
 SECTION TO BE LINED w/
 GSE H.D.P.E. "STUDLINER".

ecoSep™ - 160 GPM - STANDARD - SPILL CONTROL / COALESCING CHAMBER

DESIGN INFORMATION BASIS
 OIL SPECIFIC GRAVITY
 (NON-EMULSIFIED):

0.85
 850 kg/m³
 (~53 lbs/ft³)

OPERATING TEMPERATURE: 4-20°C (~40-70°F)
 INFLUENT OIL CONCENTRATION: 5ml/l (~5000ppm)
 (FREE OIL)
 EFFLUENT OIL CONCENTRATION: 5mg/l (~5ppm)
 FLOW (NOMINALE) RATE: 10 l/s (~160 GPM)

PROPRIETARY INFORMATION - ALL RIGHTS OF ROYAL ENVIRONMENTAL SYSTEMS, INC.

REVISIONS



PROJECT:	
LOCATION:	
OWNER:	
ENGINEER:	
CONTRACTOR:	
MANUFACTURER: ROYAL CONCRETE PIPE	
PRODUCT DESIGNATION: ECOSEP 160 GPM - SPILL CONTROL/COALESCING CHAMBER	
SCALE: 1/2"=1' DRAWN BY: JGS DATE: 01-09-07 DWG. NO: esep_res_160-pc	
DESIGNED BY: JGS CHECK 1: CHECK 2:	

ecoSep™ - 160 GPM - GRIT / OIL SEPARATION SYSTEM

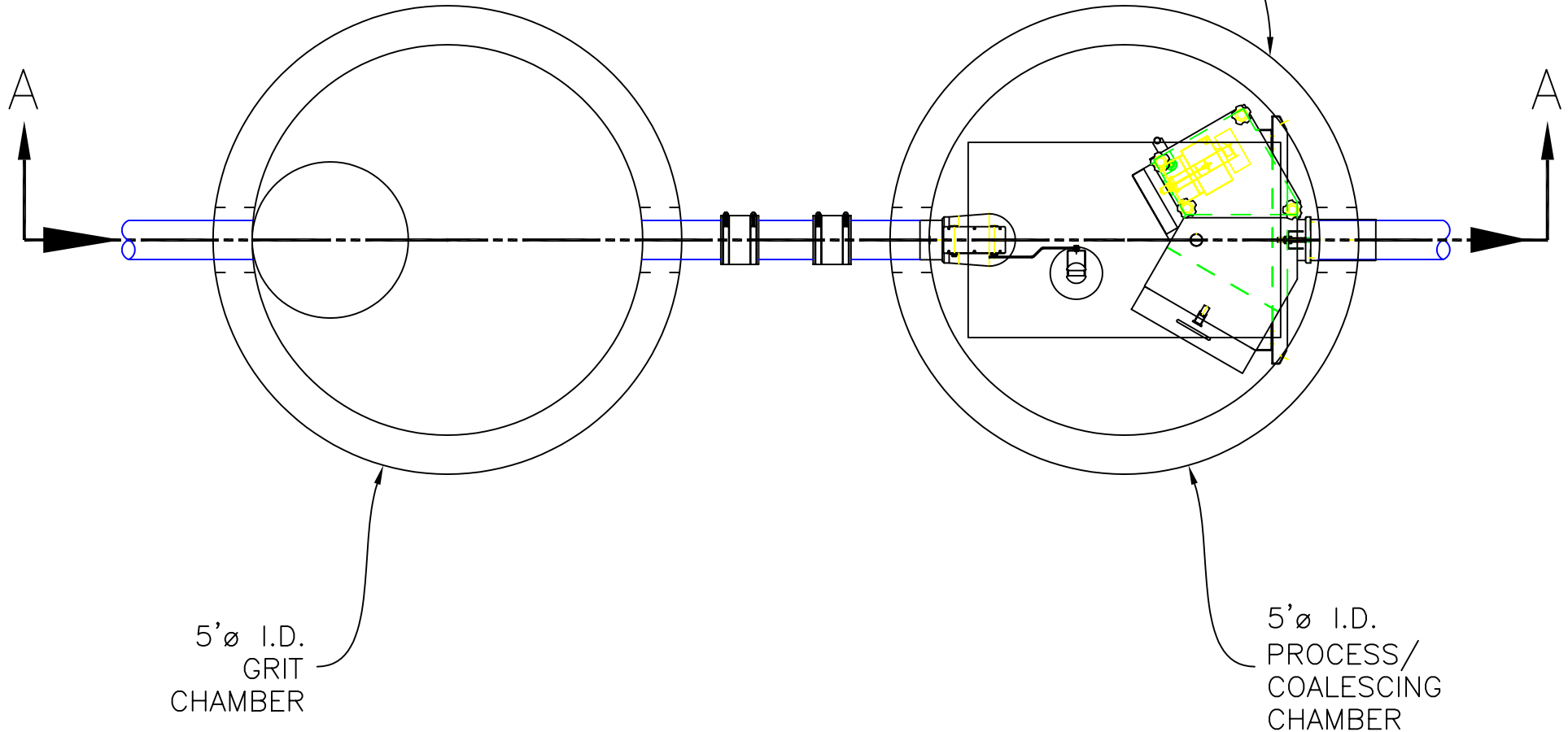
DESIGN INFORMATION BASIS

OIL SPECIFIC GRAVITY
(NON-EMULSIFIED): 0.85
850 kg/m³ (~53 lbs/ft³)
OPERATING TEMPERATURE: 4-20°C (~40-70°F)
INFLUENT OIL CONCENTRATION: 5ml/l (~5000ppm) (FREE OIL)
EFFLUENT OIL CONCENTRATION: 5mg/l (~5ppm)
FLOW (NOMINALE) RATE: 10 l/s (~160 GPM)

SPECIFICATIONS:

CONCRETE: 4,000 P.S.I. @ 28 DAYS.
ENTRAINED AIR: 5% - 9%.
STEEL: A.S.T.M. A496-A615
GRADE 60-60 KSI.
DESIGN LOADING: A.A.S.H.T.O. HS-20-44
WITH 30% IMPACT AND
EQUIVALENT SOIL PRESSURE
OF 130 (PCF).
EQUIPMENT: STAINLESS STEEL.

VENT STRUCTURE
PER LOCAL / STATE
PLUMBING CODE



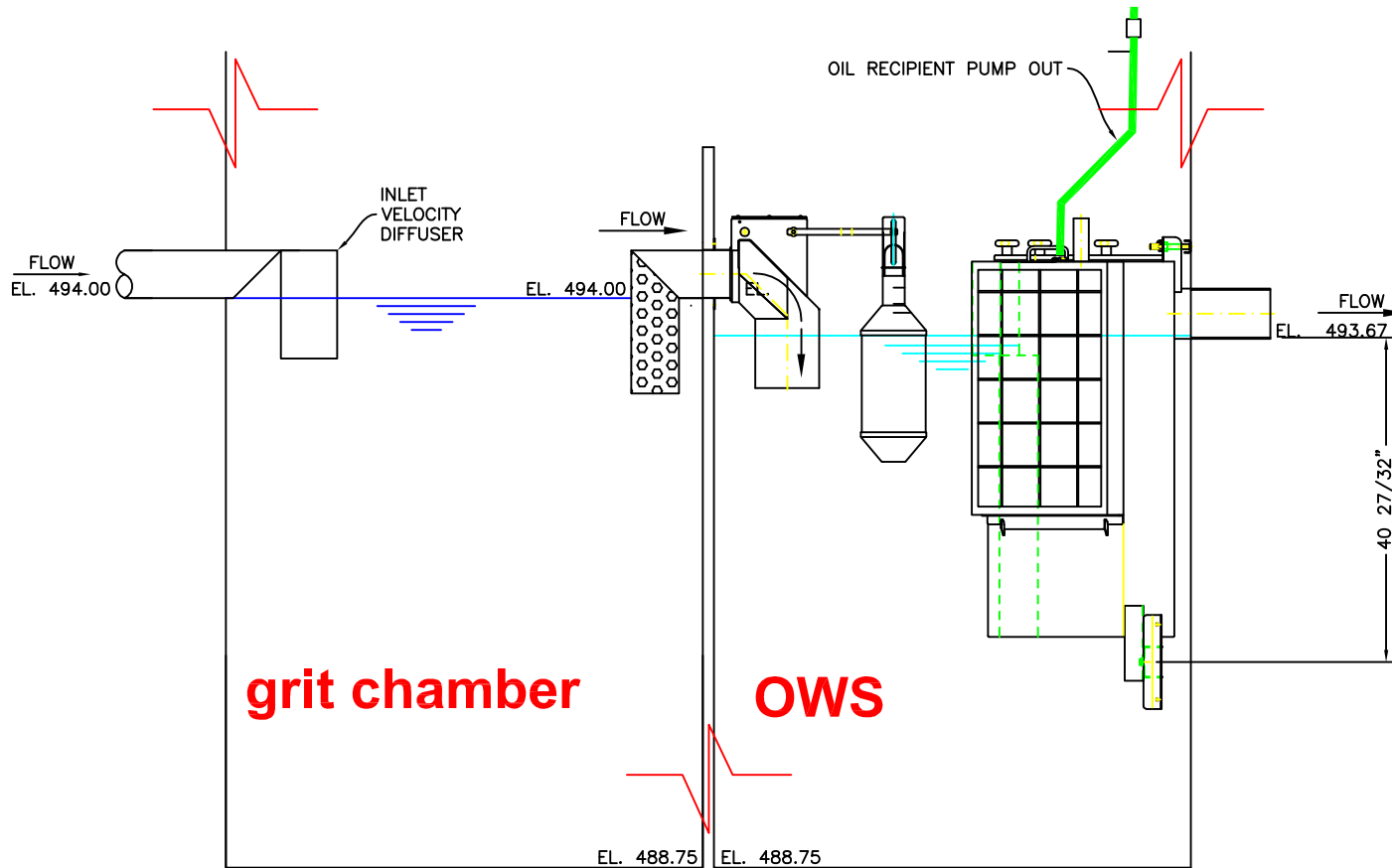
5'ø I.D.
GRIT
CHAMBER

5'ø I.D.
PROCESS/
COALESCING
CHAMBER

REVISIONS



PROJECT:	
LOCATION:	
OWNER:	
ENGINEER:	
CONTRACTOR:	
MANUFACTURER:	ROYAL CONCRETE PIPE
PRODUCT DESIGNATION:	ECOSEP 160 GPM GRIT / OIL SEPARATION PLAN VIEW
SCALE:	1/2"=1' DRAWN BY: JGS DATE: 01-09-07 DWG.NO: esep_res_160-pv
DESIGNED BY:	JGS CHECK 1: CHECK 2:



ecoSep™ - 160 GPM - GRIT / OIL SEPARATION SYSTEM

DESIGN INFORMATION BASIS

OIL SPECIFIC GRAVITY
(NON-EMULSIFIED):

0.85

850 kg/m³ (~53 lbs/ft³)

OPERATING TEMPERATURE: 4-20°C (~40-70°F)

INFLUENT OIL CONCENTRATION: 5ml/l (~5000ppm) (FREE OIL)

EFFLUENT OIL CONCENTRATION: 5mg/l (~5ppm)

FLOW (NOMINALE) RATE: 10 l/s (~160 GPM)

ecoSep - 160 GPM - CAST-IN PLACE G.C./OWS

REVISIONS



PROJECT:	PRADO DAM OWS
LOCATION:	CALIFORNIA
OWNER:	USACE
ENGINEER:	TURNER COLLIE & BRADEN
CONTRACTOR:	THE MURRAY COMPANY
MANUFACTURER:	ROYAL ENVIRONMENTAL SYSTEMS
PRODUCT DESIGNATION:	ECOSEP - 160 GPM - STANDARD - GRIT CHAMBER
SCALE:	1/2"=1' DRAWN BY: JGS DATE: 11-13-05 DWG. NO: esep_Prado_section
DESIGNED BY:	JGS CHECK 1: CHECK 2: